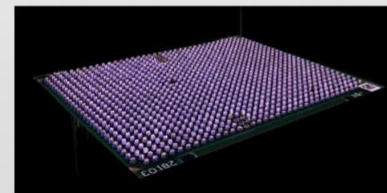
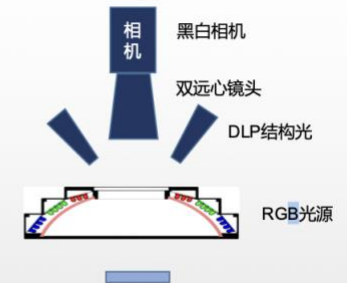
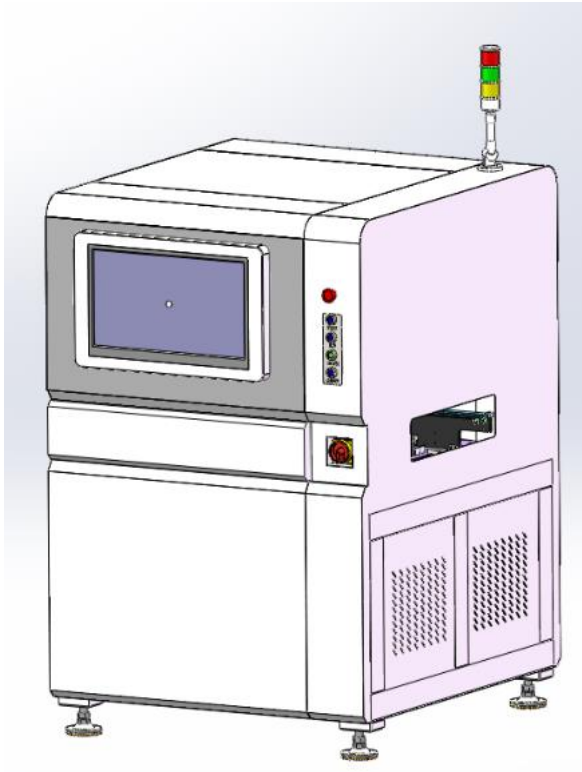


Online GODZILA 3D Automatic Optical Inspection system (3D Design Outlook)

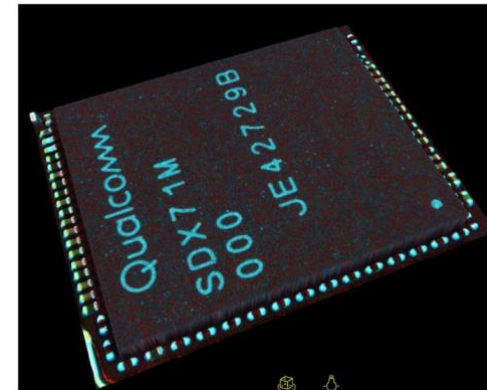
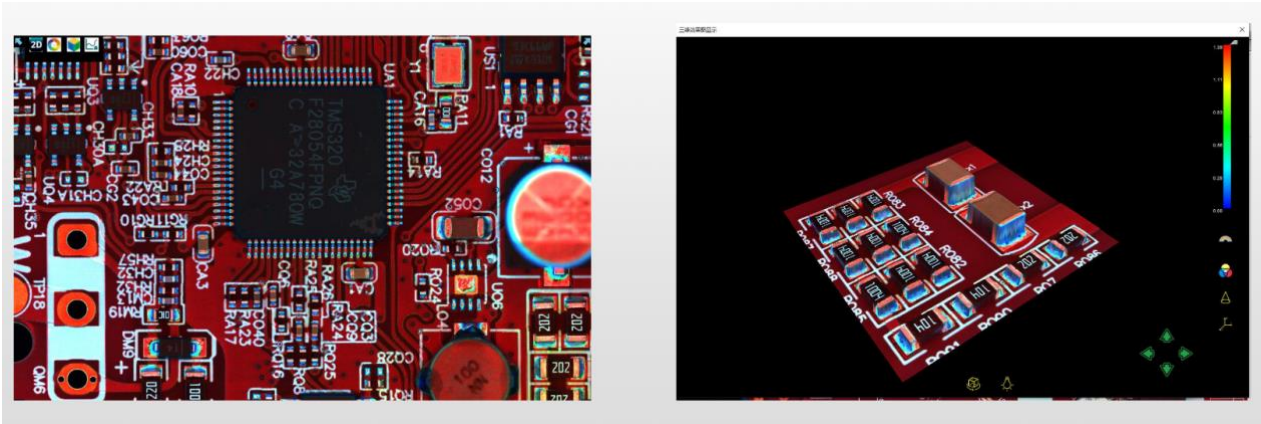




设备特点/Equipment Feature: (Model: GH-12M-3DAOI) with different colour of 3D pictures

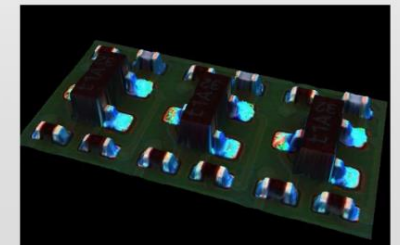
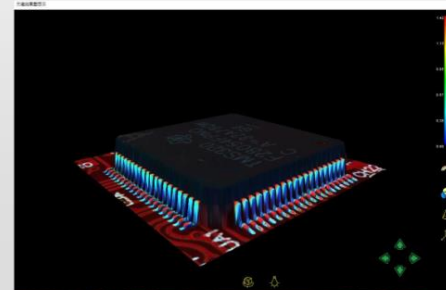
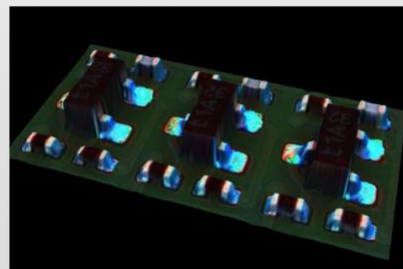
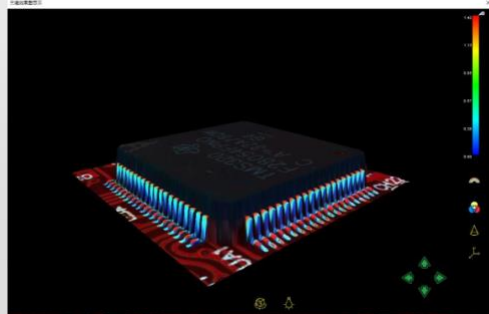
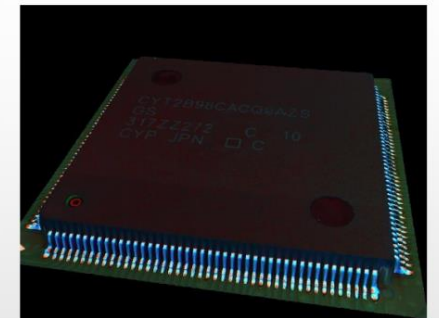
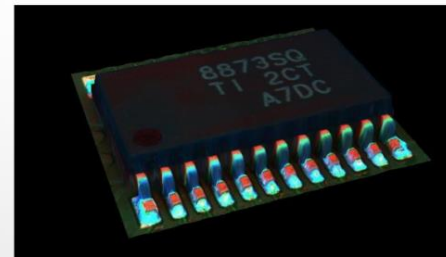
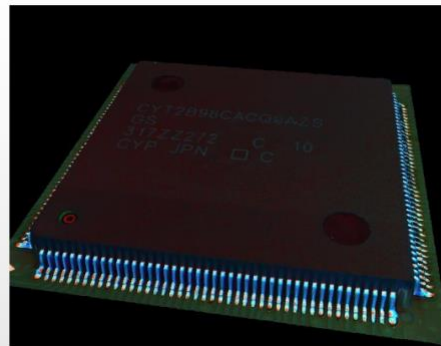
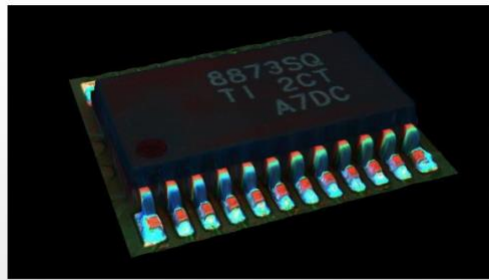
- 精准快速的检测速度.(Precise fast detection speed)
- 智能高清晰数字 CCD 相机,图像质量稳定可靠.(Intelligent hd digital CCD camera, the image quality is stable and reliable)
- 简便.灵活.快捷的编程及调试.(Easy.Flexible.Quick programming and debugging)
- CAD 数据导入自动搜寻元件库.(CAD data import automatic search component libraries)
- 自动定位系统,大大提高编程速度.(Automatic positioning system,greatly improving programming speed)
- 多功能的 SPC 统计系统.(Muti_function SPC statistical systems)

SAMPLE 3D picture A





SAMPLE 3D picture B





AOI 参数/ Specification:

参数/Specification		单轨 Single GH12M-3DAOI
功能/Function	检测项目/ Inspect Points	缺件、错件、极反、偏移、虚焊、多锡、少锡、连锡、立碑、反贴、翘脚、叠件、破损、多件、划伤、金手指 Missing or offset or skew or tombstone components, reverse, wrong parts, empty solder and multiple parts
性能/ Performance	相机/ Cameras Main	1200 万像素高清彩色相机 / 12M pixel HD Color Camera (4000 x 3000 pix)
	Side Cameras (4 qty)	5M pixel
	3D 光源/ Light Source	四 DLP 光源 (光栅相移技术) +RGB 多层光源-LED 环形光源 Four DLP light source + RGB multi-layer – LED Ring Lighting Source
	检测速度/Inspect Speed	1.8 FOV/sec (FOV : 40 x 30 mm- Pix 0.01 mm)
	光学解析度/ Optical Resolution	10ummm / 15µmm
	检测能力/ Inspection Rate	10% at 6σ(± 50% tolerance)
	最大板弯补偿值/Max. Wrapping	± 2mm
	最大检测高度/ Insp. Max height	20mm/40mm
	最小零件/ Smallest components	CHIP 0201 mm, CHIP 01005
平台	运动机构/ Motion Mechanism	丝杠导轨/ LM Guide & Ball screw with Servo Motor
	Type of Axis	X / Y / Z Axis (Z axis 100 mm)
	解析精度/Analysis accuracy	10 µm



	移动速度/ Moving speed	800mm/sec
电路板与输送系统 PCB & Transfer system	PCB 可测尺寸 /Dimension	50 x 50mm to 510 x 460 mm (or Option:-Special larger size)
	电路板可测厚度/PCB thickness	0.5mm~6mm
	最大板重限制/PCB weight	5kg
	轨道高度/ Rail height	900±40mm
	通讯接口/ Interface	标准 SMEMA/ Standard
	零件高度限制/Dimensions	上端/Top: 40mm 底端/Bottom: 55mm 侧边/Side: 3mm~5mm
外观和重量 Dimension & Weight	外形尺寸/ MC Dimension	12000 x 1300 x 1650 mm
	设备重量	900KG
电气规格 Power & Air	电源/Power	220V 单相/Single, 50~60Hz, 2kVA
	气压/Compress Air	5Kg/cm ²
软件/Software	操作系统 /Operating System	Windows 10 64Bit with 1TB memory
其它/Other	选配功能/Optional Feature	离线编程/Offline Programming、控制中心/Central Control、Barcode Reader(1D&2D)、